

waste cans

32-Gal Basic Waste Receptacle

A basic 32 gallon waste receptacle. Constructed from a proprietary rubber compound engineered for durability and resilience. Not for use with dolly base.

item	9832
dimensions	25.38" x 21.63" x 27.5"
weight	6.2 lbs
units per pack	6 or bulk
pack dimension	25" x 22.5" x 46.88"
pack weight	37.3 lbs
product origin	made in usa



32-Gal Basic Waste Receptacle Lid

Add a lid to the basic 32 gallon receptacle. Snap fit and release keeps contents dry and sealed.

item	9832-LID
dimensions	23.75" x 22" x 3"
weight	1.1 lbs
units per pack	6
pack dimension	21.75" x 21.75" x 10"
carton weight	12 lbs
product origin	made in usa

32 & 44-Gal Standard Can

The industry Standard 32 & 44-gallon waste can. Made from a proprietary rubber compound and durably constructed. Comfort hand grips and universal base for dolly attachment.

item	9032 (32 Gal.) 9844 (44 Gal.)
dimensions	26.25" x 24.13" x 31.06" (9844)
units per pack	40 pieces per pallet (9032) 32 pieces per pallet (9844)
product origin	made in usa

Fits Dome Top Lids



44-Gal Standard Can Lid

Add a lid to the 44-gallon Standard waste can. Snap fit and release keeps contents dry and sealed. Commercial grade material.

item	9844-LID (44 Gal.)
dimensions	26.38" x 24.38" x 1.5"
units per carton	6
carton dimension	25.5" x 9" x 26"
carton weight	12 lbs
product origin	made in usa

Delamo Manufacturing

7171 Telegraph Road
Montebello, CA 90640
USA

w. www.delamo-mfg.com
e. delamo@delamo-mfg.com
t. 888/711.8011
t. 323/936.3566
f. 323/936.3567



slim "mo" waste cans

Slim "Mo" Waste Can

Space efficient design and 23-gallon capacity. Comfort hand grips. Made from proprietary rubber compound. Ideal for waste management programs. Labeling programs welcome.

item	9823
dimensions	22" x 11" x 30"
units per carton	4
carton weight	27.2 lbs
carton dimensions	22.75" x 11" x 37.5"
product origin	made in usa



Slim "Mo" Waste Can Lids

8824 Swing Top Lid. Popular disposal lid with conceal swing action. Molded from impact resistant material for long life. Fits most competitive slim type containers. Black.

8825 Can/Bottle Lid. Recycle system lid for can/ bottle collection. Fits most competitive slim type containers. Green.

8826 Paper Lid. Recycle system lid for paper collection. Fits most competitive slim type containers. Blue.

item	8824 (Swing Top Lid) 8825 (Can/Bottle Lid) 8826 (Paper Lid)
dimensions	22.5" x 11.25" x 5" (8824) 22.5" x 11.25" x 1.25" (8825) 22.5" x 11.25" x 1.25" (8826)
units per carton	2 (8824), 6 (8825/8826)
carton weight	7.2 lbs (8824) 6.1 lbs (8825) 6.25 lbs (8826)
carton dimensions	21.85" x 11.5" x 7.13" (8824/25/26)
product origin	made in usa



Delamo Manufacturing

7171 Telegraph Road
Montebello, CA 90640
USA

w. www.delamo-mfg.com
e. delamo@delamo-mfg.com
t. 888/711.8011
t. 323/936.3566
f. 323/936.3567



Patent Pending



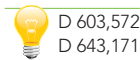
Patented Item

dynamo utility cans

32 & 44-Gal DYNAMO Utility Can

The Dynamo 32 & 44-gallon utility can are the first with utility built right into each can. Plenty of clips and storage for a variety of cleaning tools ready right where you need them. Constructed from a proprietary rubber compound, The Dynamo is engineered for durability and resilience.

item	9808 (32 gal.) 9810 (44 gal.)
dimensions	22.5" x 25.25" x 27.5" (32 gal.) 27.5" x 24.5" x 31" (44 gal.)
weight	8.71 lbs (32 gal.) 10.5 lbs (44 gal.)
units per pack	40 pieces per pallet (9808) 32 pieces per pallet (9810)
pack dimension	26" x 26" x 67" (32 gal.) 28" x 25" x 67" (44 gal.)
pack weight	53 lbs (32 gal.) 63 lbs (44 gal.)
product origin	made in usa



D 603,572
D 643,171



- ▶ Utility rim has clips and storage for a broom, mop, lobby pan, wet floor sign, scrapers, tools and more.
- ▶ Liner lock belts allow can liner to fit neatly inside can.
- ▶ Vented channels for easy utility liner removal.
- ▶ Durable and comfortable hand grips.



Delamo Manufacturing

7171 Telegraph Road
Montebello, CA 90640
USA

w. www.delamo-mfg.com
e. delamo@delamo-mfg.com
t. 888/711.8011
t. 323/936.3566
f. 323/936.3567



Patent Pending



Patented Item

dynamo utility can accessories

32 & 44-Gal **DYNAMO** Utility Can Lid

Keep contents dry with the Dynamo lid. Designed to drain water and prevent pooling.

item	9809 (32 gal.) 9811 (44 gal.)
dimensions	25.25" x 22.9" x 1.5" (32 gal.) 27.25" x 25" x 1.5" (44 gal.)
weight	1.8 lbs (32 gal.) 1.8 lbs (44 gal.)
units per pack	6
pack dimension	23.13" x 8.63" x 23" (32 gal.) 25.5" x 9" x 26" (44 gal.)
carton weight	12 lbs (32 gal.) 16 lbs (44 gal.)
product origin	made in usa



DYNAMO Cup

The Dynamo cup holds an entire roll of utility can liners, more tools, or your favorite hot/ cold beverage. The Dynamo cup is easily attached and removed from the utility can with a positive snap locking mechanism.

item	9812 (for 32 gal can) 9813 (for 44 gal can)
dimensions	6.13" x 4.75" x 6.69" (9812) 6.38" x 4.75" x 6.69" (9813)
weight	0.28 lbs (8812) 0.31 lbs (8813)
units per carton	6
carton dimensions	19.19" x 7.63" x 6.75"
carton weight	2.3/2.4 lbs (8812/8813)
product origin	made in usa



Delamo Manufacturing

7171 Telegraph Road
Montebello, CA 90640
USA

w. www.delamo-mfg.com
e. delamo@delamo-mfg.com
t. 888/711.8011
t. 323/936.3566
f. 323/936.3567



dolly systems

DYNAMO Utility Can Dolly

Add the Dynamo dolly to give your utility can convenience and transportability. Oversized dolly prevents tipping and provides a base for long stick cleaning tools to rest. Includes 3" non-marking durable swivel casters. Fits 32-gal and 44-gal Dynamo cans and universal fit base fits most utility cans.

item	9807
dimensions	23.25" x 23.25" x 6.75"
weight	6.8 lbs
units per carton	2
carton dimension	23.13" x 8.63" x 23"
carton weight	15 lbs
upc	8-92034-00205-7
product origin	made in usa



Standard Can Dolly

A traditional standard can dolly gives your standard utility can convenience and transportability. Includes 3" non-marking durable swivel casters. Screw on base fits most utility cans. Constructed from a proprietary rubber compound engineered for durability and resilience.

item	9806
dimensions	16.5" x 16.5" x 6.5"
weight	4.8 lbs
units per carton	2
carton dimension	17.63" x 17.63" x 6.63"
carton weight	10 lbs
upc	8-92034-00206-4
product origin	made in usa



Delamo Manufacturing

7171 Telegraph Road
Montebello, CA 90640
USA

w. www.delamo-mfg.com
e. delamo@delamo-mfg.com
t. 888/711.8011
t. 323/936.3566
f. 323/936.3567



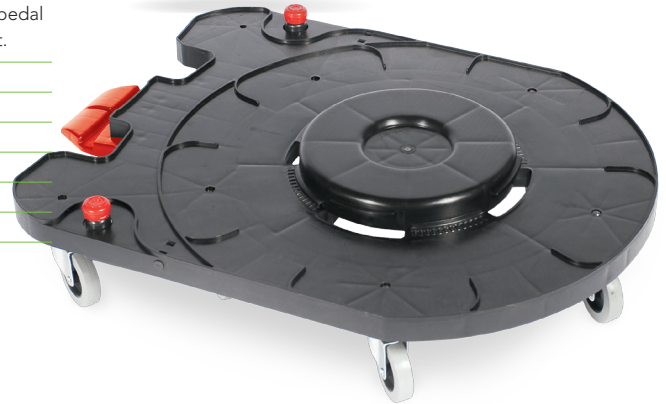
auto dolly


Auto Dolly

This unique trolley dolly is also a docking station for all Delamo wringer buckets. Designed with a large footprint and seven 3" caster wheels for stability and a base platform for long stick tools when used with the Dynamo utility can; also fits most utility cans. In addition, it features a foot pedal lock to engage and release the Delamo wringer bucket.

item	9805
dimensions	29" x 22" x 7"
weight	9.3 lbs
units per carton	2
carton dimension	29.25" x 22.06" x 12"
carton weight	20 lbs
product origin	made in usa

Works With All Delamo Wringer Buckets



8,256,778 



Auto Dolly Docking Features

The Dynamo Auto Dolly is a perfect alternative to a janitors cart with wringer bucket and provides added function and versatility. No need to lift heavy buckets, just dock and go.

The Dynamo Auto Dolly locks the wringer bucket onto the utility can dolly at floor level. No heavy lifting required. Easy to release, simply step on the foot pedal button on right or left and it is undocked, ready to roll.

Shown: Auto Dolly (#9805), Dynamo Utility Can (#9810), Lobby Dust Pan with Wheels (#9378), Lobby Broom (#8363 - see Professional Catalog), 35-Quart Heavy-Duty Side Press Wringer Bucket Combo (#9035-SP), Quick Change Mop (#8711 - see Professional Catalog), Folding Wet Floor Sign (#8011 - see Professional Catalog) and other tools.



#9805 Auto Dolly docked to #9804 Duo Dolly



Shown with Pro-line color option.

Delamo Manufacturing

7171 Telegraph Road
Montebello, CA 90640
USA

w. www.delamo-mfg.com
e. delamo@delamo-mfg.com
t. 888/711.8011
t. 323/936.3566
f. 323/936.3567



duo dolly

Duo Dolly

Duo Dolly is just that. Now you can use the Duo Dolly to attach any thread based trash can or any manufactures' wringer bucket combo. This dual function dolly is designed for the Delamo Auto System (Auto Dolly and Janitor Auto Carts).

Dozens of combinations for every task — use a regular and recycled waste can for one person trash collection, or a full size waste can and Janitor cart, or other existing tools and more.

item	9804
dimensions	23.38" x 20.38" x 6.75"
units per carton	2
carton dimension	23.13" x 8.63" x 23"
carton weight	14.4 lbs
product origin	made in usa



Duo Dolly Docking Options:

#9804 Duo Dolly docked to #8989 Janitor Auto Cart (see Professional Catalog)



Delamo Manufacturing

7171 Telegraph Road
Montebello, CA 90640
USA

w. www.delamo-mfg.com
e. delamo@delamo-mfg.com
t. 888/711.8011
t. 323/936.3566
f. 323/936.3567



wringer buckets

26, 35 & 44-Quart Heavy-Duty Down Press Wringer Bucket Combo

Commercial grade industrial plastic molded from a post consumer proprietary rubber compound, which is engineered for durability and resilience. Attached 3" non-marking casters, comfort grip, form fit bail wire and easy to clean. Bucket features reinforced double wall rim and thick wall construction. Down press wringer has dual drive nylon gear mechanisms for heavy-duty performance and long life.



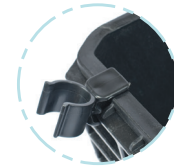
**Professional
Grade Heavy Duty
Construction**



item	9026-DP (26-Qt.) 9035-DP (35-Qt.) 9044-DP (44-Qt.)
dimensions	21" x 16.38" x 33.5" (26-Qt.) 23" x 17" x 34.88" (35-Qt.) 23.5" x 17" x 35.25" (44-Qt.)
units per carton	1
carton dimension	21" x 16.5" x 21.25" (26-Qt.) 21" x 16.5" x 21.25" (35-Qt.) 22.75" x 17" x 19.5" (44-Qt.)
carton weight	19 lbs (26-Qt.) 21 lbs (35-Qt.) 22 lbs (44-Qt.)
product origin	made in usa

26, 35 & 44-Quart Heavy-Duty Side Press Wringer Bucket Combo

Commercial grade industrial plastic molded from a post consumer proprietary rubber compound, which is engineered for durability and resilience. Attached 3" non-marking casters, center leverage handle, comfort grip, form fit bail wire and easy to clean. Bucket features reinforced double wall rim and thick wall construction. Side press wringer has uni-body design for heavy-duty performance and long life.



mop clip close-up

**Professional
Grade Heavy Duty
Construction**



item	9026-SP (26-Qt.) 9035-SP (35-Qt.) 9044-SP (44-Qt.)
dimensions	20.75" x 16.38" x 34" (26-Qt.) 22.75" x 17" x 35.25" (35-Qt.) 23.5" x 17" x 36.38" (44-Qt.)
units per carton	1
carton dimension	21.25" x 17.25" x 18" (26-Qt.) 21" x 16.5" x 21.25" (35-Qt.) 22.75" x 17" x 19.5" (44-Qt.)
carton weight	18.2 lbs (26-Qt.) 19.6 lbs (35-Qt.) 20.3 lbs (44-Qt.)
product origin	made in usa

Delamo Manufacturing

7171 Telegraph Road
Montebello, CA 90640
USA

w. www.delamo-mfg.com
e. delamo@delamo-mfg.com
t. 888/711.8011
t. 323/936.3566
f. 323/936.3567



dust pans

Jumbo Debris Lobby Dustpan

An extra large version of the standard lobby dust pan. Constructed from high impact, light weight, special formulated rubber compound. Swivel pan and T-bar feature a lock for upright mobility. Features a curved handle for easy use. A solid edge strip helps pick up fine dirt and dust. Multiple units nest tightly together. Made from recycled materials.

item	9497
dimensions	13" x 13.5" x 33"
weight	2.8 lbs
units per carton	10
carton dimension	18" x 14" x 30.5"
carton weight	31 lbs
product origin	made in usa



7,509,705
D551,820
D545,022



Medium Plastic Dustpan

A professional grade dust pan molded in a proprietary rubber compound. Features include a hang hole, snap on broom handle grip and broom cleaning corners. 12" edge, 7" pan (13" length including handle) Made from recycled materials.

item	9530
dimensions	13" x 12.38" x 5"
weight	0.46 lbs
units per carton	24
carton dimension	26" x 11.5" x 13.13"
carton weight	13.4 lbs
product origin	made in usa



Snap-on Handle Grip

Lobby Dustpan w/ Wheels & Broom Clip

Molded from lightweight and durable special formulated rubber compound with metal handle and swivel cap. Pan locks into upright position or swings down to carry debris and for easy dumping. Integrated wheels prevent damage from dragging pan. Multiple units nest tightly together. Made from recycled materials.

item	9378
dimensions	13.5" x 4.5" x 39"
weight	1.8 lbs
units per carton	6
carton dimension	41.25" x 15" x 13.13"
carton weight	11.8 lbs
product origin	made in usa



7,509,705
D551,820



Delamo Manufacturing

7171 Telegraph Road
Montebello, CA 90640
USA

w. www.delamo-mfg.com
e. delamo@delamo-mfg.com
t. 888/711.8011
t. 323/936.3566
f. 323/936.3567



Patent Pending



Patented Item

waste baskets

14, 28 & 41 Qt. Office Wastebasket

14, 28 & 41 quart office wastebaskets are molded with a proprietary rubber compound. Also available in traditional grade plastic.

item	9855 (14 Qt.) 9828 (28 Qt.) 9841 (41 Qt.)
dimensions	11.13" x 7.81" x 12.06" (14 Qt.) 14.38" x 10" x 15" (28 Qt.) 15.68" x 10.88" x 19.88" (41 Qt.)
weight	1.4 lbs (14 Qt.) 1.9 lbs (28 Qt.) 2.7 lbs (41 Qt.)
units per bulk pack	12 or bulk (14 Qt.) 6 or bulk (28 Qt.) 6 or bulk (41 Qt.)
carton dimensions	23.13" x 8.63" x 23" (14 Qt.) 14.75" x 10.75" x 20.75" (28 Qt.) 15.75" x 11.25" x 26" (41 Qt.)
carton weight	17.24 lbs (14 Qt.) 13 lbs (28 Qt.) 18 lbs (41 Qt.)
product origin	made in usa



14, 28 & 41 Qt. Recycle Systems Office Wastebasket

14, 28 & 41 quart recycle office wastebaskets are molded with a proprietary rubber compound. Also available in traditional grade plastic.

item	9855-BR (14 Qt. - Black) 9828-BR (28 Qt. - Black) 9841-BR (41 Qt. - Black)
dimensions	11.13" x 7.81" x 12.06" (14 Qt.) 14.38" x 10" x 15" (28 Qt.) 15.68" x 10.88" x 19.88" (41 Qt.)
weight	1.4 lbs (14 Qt.) 1.9 lbs (28 Qt.) 2.7 lbs (41 Qt.)
units per bulk pack	12 or bulk (14 Qt.) 6 or bulk (28 Qt.) 6 or bulk (41 Qt.)
carton dimensions	23.13" x 8.63" x 23" (14 Qt.) 14.75" x 10.75" x 20.75" (28 Qt.) 15.75" x 11.25" x 26" (41 Qt.)
carton weight	17.24 lbs (14 Qt.) 13 lbs (28 Qt.) 18 lbs (41 Qt.)
product origin	made in usa

Custom Labeling and Recycling Programs



Delamo Manufacturing

7171 Telegraph Road
Montebello, CA 90640
USA

w. www.delamo-mfg.com
e. delamo@delamo-mfg.com
t. 888/711.8011
t. 323/936.3566
f. 323/936.3567

